

**Dual**

## Superfici vibranti

L'alternanza di superfici laccate lisce e a poro aperto consente di ottenere un effetto che esalta il gioco delle incisioni donando alla porta un aspetto vibrante alla luce. L'effetto è applicabile alle collezioni TOSCA e BUTTERFLY di OTC DOORS per tutti i modelli e tutte le colorazioni, sia con venatura orizzontale che verticale.

### *Vibrant surfaces*

*The alternating of lacquered surfaces with smooth and grained finishes results in an effect which intensifies engravings, giving the door a vibrant look in the light.*

*The effect is applicable to the OTC DOORS, TOSCA and BUTTERFLY collections, for all models and all colours, be that with horizontal or vertical veining.*

### *Surfaces vibrantes*

*L'alternance de surfaces laquées lisses et à pore ouvert permet d'obtenir un effet qui exalte le jeu des entailles en donnant à la porte un aspect vibrant à la lumière.*

*L'effet est applicable aux collections Tosca et Butterfly d'OTC DOORS pour tous les modèles et toutes les colorations, aussi bien avec une veinure horizontale que verticale.*



orizzontale



verticale

**TOSCA**  
**M04 DUAL**  
**orizzontale**

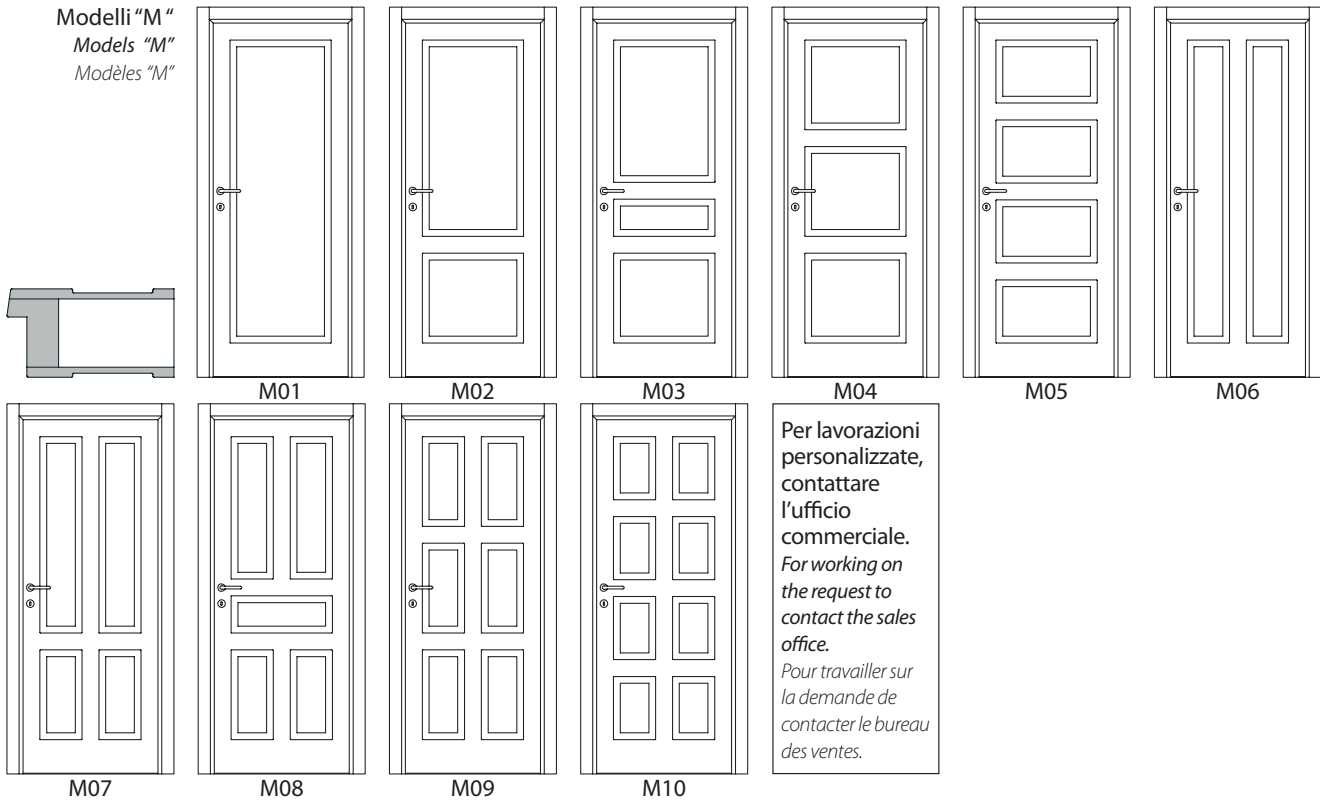
Laccato RAL 1013, imbotte New Style  
*Lacquered RAL 1013, blockboard door New Style*  
*Laqué RAL 1013, bâti New Style*



**TOSCA**  
**M04 DUAL**  
**verticale**

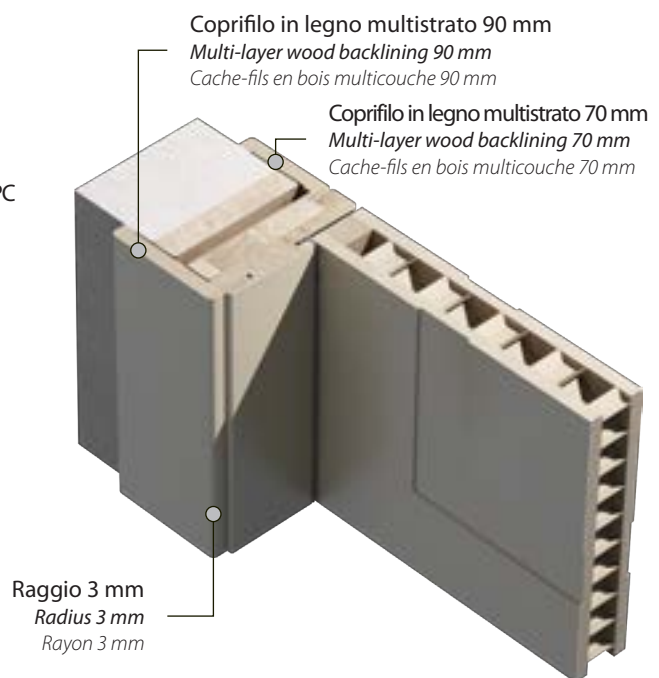
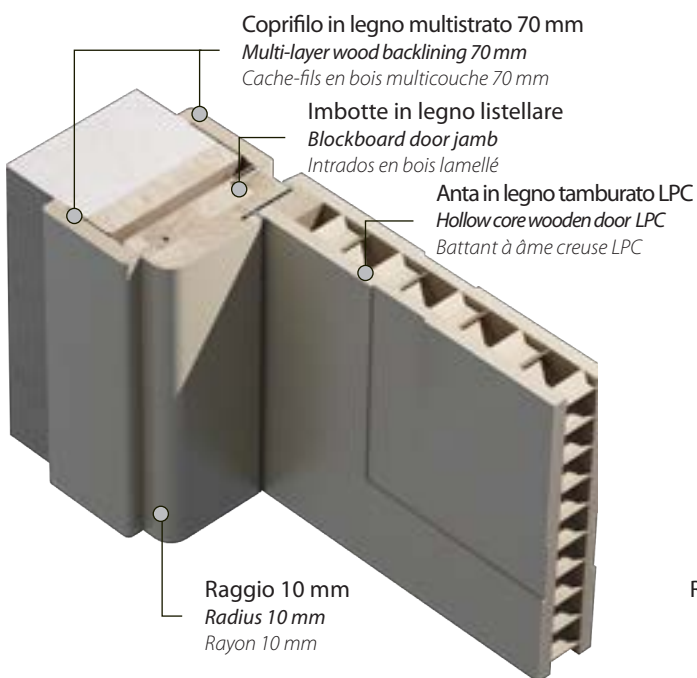
Laccato RAL 1013, imbotte New Style  
*Lacquered RAL 1013, blockboard door New Style*  
*Laqué RAL 1013, bâti New Style*

Modelli "M"  
 Models "M"  
 Modèles "M"

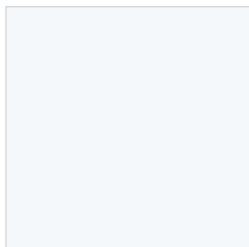


**Imbotte - Raggio 10**  
 Radius 10 - Door jamb  
 Intrados - Rayon 10

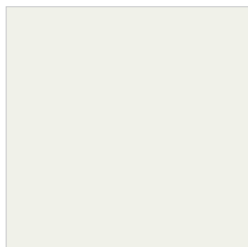
**Imbotte - New Style**  
 New Style - Door jamb  
 Intrados - New Style



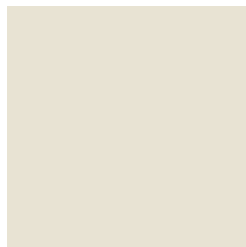
Laccato colori  
standard  
*Lacquered  
standard colors  
Couleurs  
standard laqués*



RAL 9003



RAL 9010

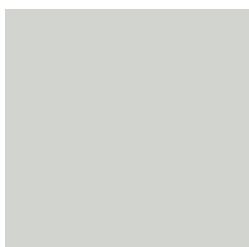


RAL 9001



RAL 1013

RAL (opzionale)  
*RAL (optional)  
RAL (sur demande)*



RAL 9002



RAL 9018



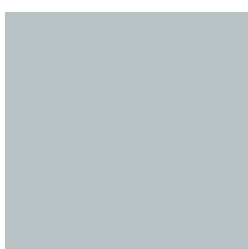
RAL 7038



RAL 7024



RAL 7032



RAL 7035



RAL 7046



RAL 8019



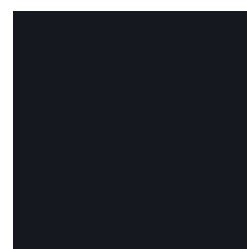
RAL 7044



RAL 7036



RAL 7012



RAL 9011



RAL 3012



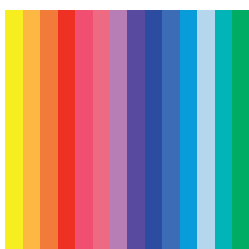
RAL 3011



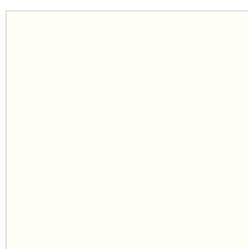
RAL 6019



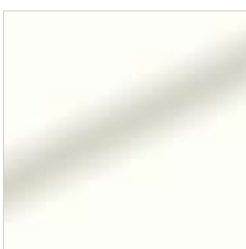
RAL 5001



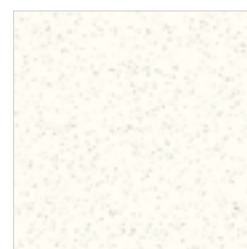
Altri colori RAL su richiesta  
*Other RAL colors on request  
Autres couleurs RAL sur demande*



Finitura opaca (di serie)  
*Matte finish (standard)  
Finition mate (standard)*



Finitura lucida (opzionale)  
*Glossy finish (optional)  
Finition brillante (sur demande)*



Fin. goffrato fine (opzionale)  
*Finish embossed (optional)  
Terminer en relief (sur demande)*

Verificare su mazzetta i colori reali, quelli riportati sul presente catalogo sono puramente indicativi  
*Check wad of real colors, as shown in this catalog are purely indicative  
Vérifiez liasse de couleurs réelles, comme indiqué dans ce catalogue sont purement indicatives*



orizzontale



verticale



**Porta blindata NEREA**  
**Security door NEREA**  
**Porte de sécurité NEREA**

Rivestimento interno V08 DUAL verticale Laccato RAL 7044  
Internal panel V08 DUAL verticale *Lacquered* RAL 7044  
*Panneaux intérieur V08 DUAL verticale Laqué* RAL 7044



**V08** | Laccato RAL 7044  
**DUAL** | Lacquered RAL 7044  
**verticale** | Laqué RAL 7044



orizzontale

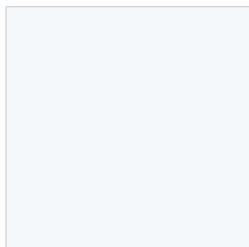


verticale

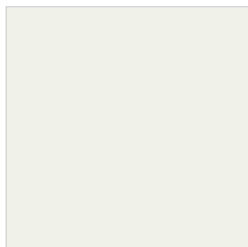
**680**  
**DUAL**  
**verticale**

Filo imbotte, Laccato RAL 9018  
*Blockboard coplanar, Lacquered RAL 9018*  
*Bâti coplanaires, Laqué RAL 9018*

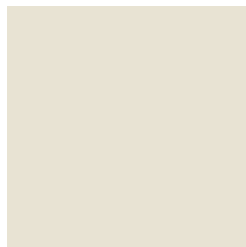
Laccato colori  
standard  
*Lacquered  
standard colors  
Couleurs  
standard laqués*



RAL 9003



RAL 9010

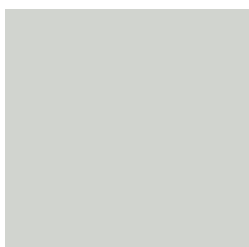


RAL 9001



RAL 1013

RAL (opzionale)  
*RAL (optional)  
RAL (sur demande)*



RAL 9002



RAL 9018



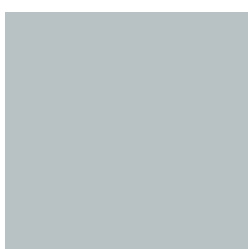
RAL 7038



RAL 7024



RAL 7032



RAL 7035



RAL 7046



RAL 8019



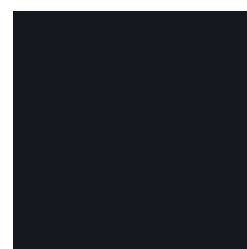
RAL 7044



RAL 7036



RAL 7012



RAL 9011



RAL 3012



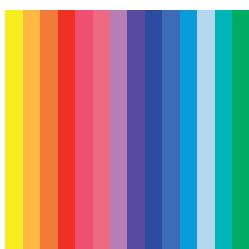
RAL 3011



RAL 6019



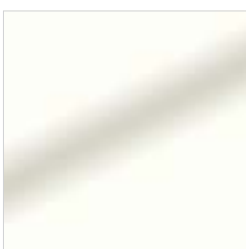
RAL 5001



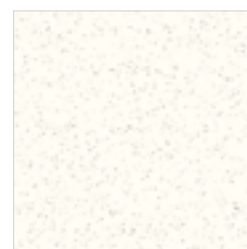
Altri colori RAL su richiesta  
*Other RAL colors on request  
Autres couleurs RAL sur demande*



Finitura opaca (di serie)  
*Matte finish (standard)  
Finition mate (standard)*



Finitura lucida (opzionale)  
*Glossy finish (optional)  
Finition brillante (sur demande)*

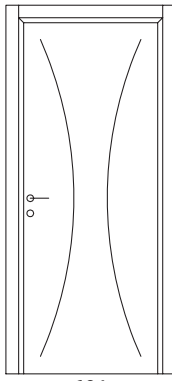
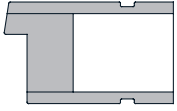


Fin. goffrato fine (opzionale)  
*Finish embossed (optional)  
Terminer en relief (sur demande)*

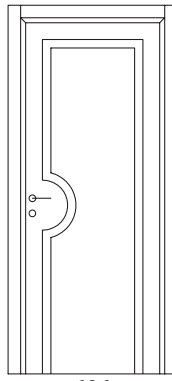
Verificare su mazzetta i colori reali, quelli riportati sul presente catalogo sono puramente indicativi  
*Check wad of real colors, as shown in this catalog are purely indicative  
Vérifiez liasse de couleurs réelles, comme indiqué dans ce catalogue sont purement indicatives*



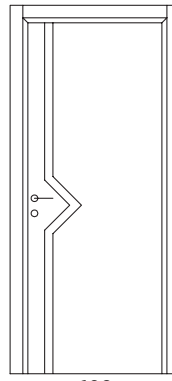
Modelli  
Models  
Modèles



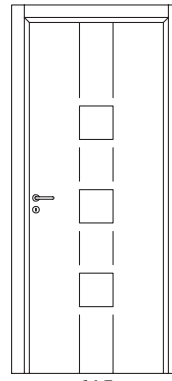
601



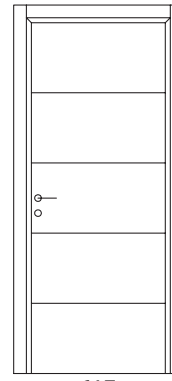
606



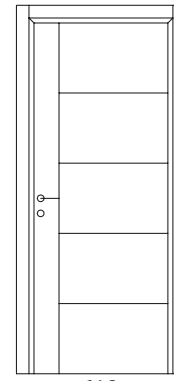
609



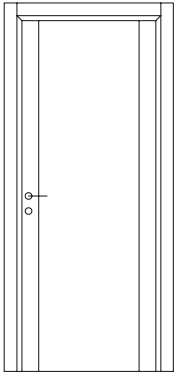
615



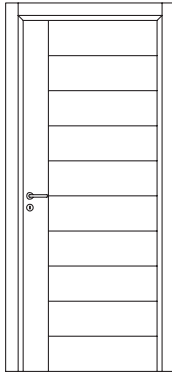
617



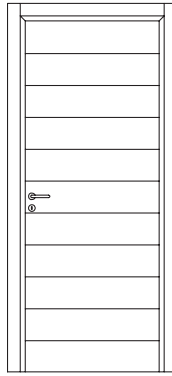
618



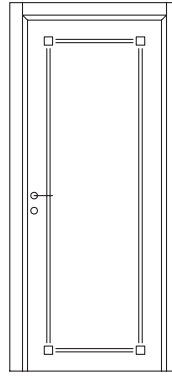
620



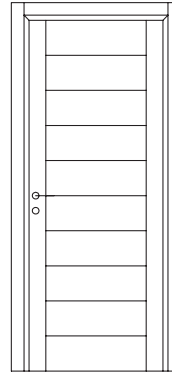
627



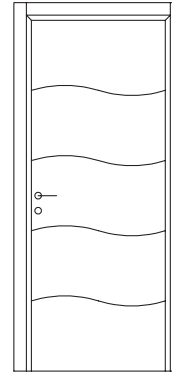
628



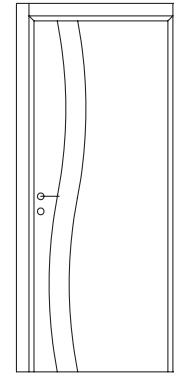
641



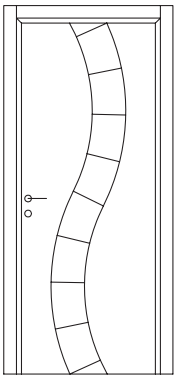
655



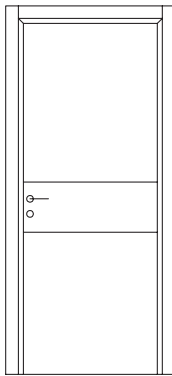
657



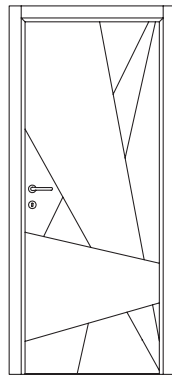
659



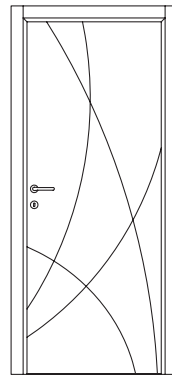
660



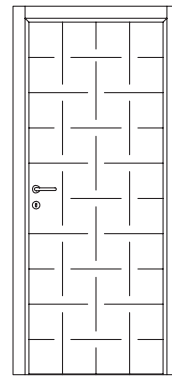
663



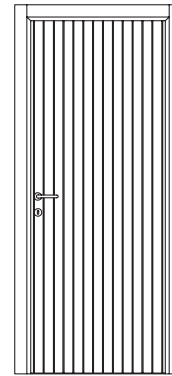
680



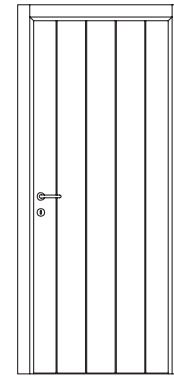
681



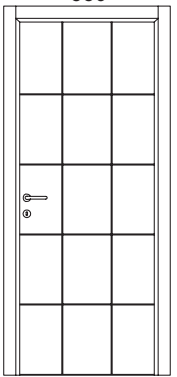
682



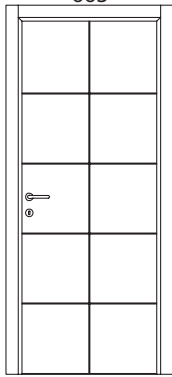
683



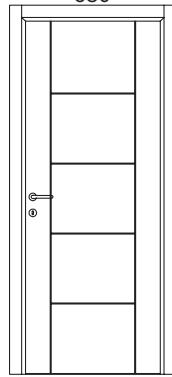
684



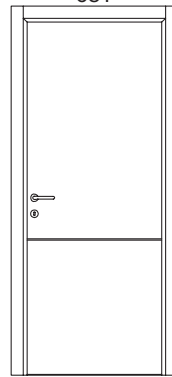
685



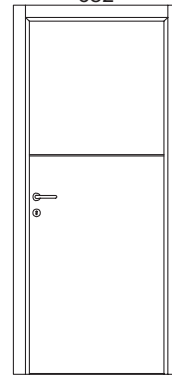
686



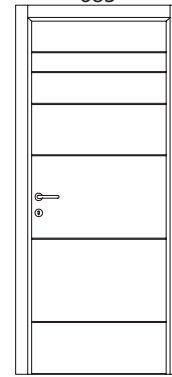
687



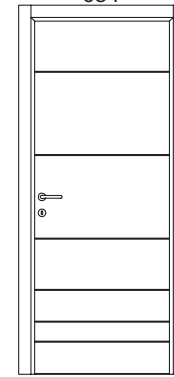
688



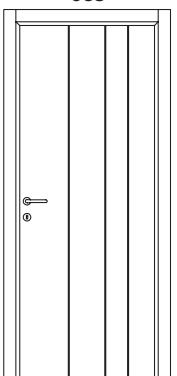
689



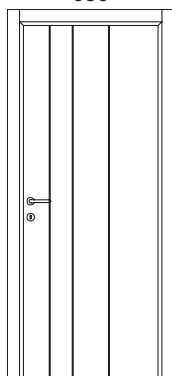
690



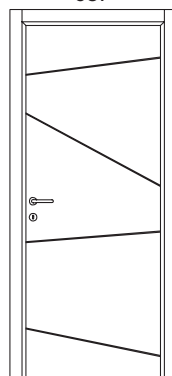
691



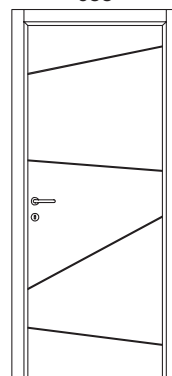
692



693



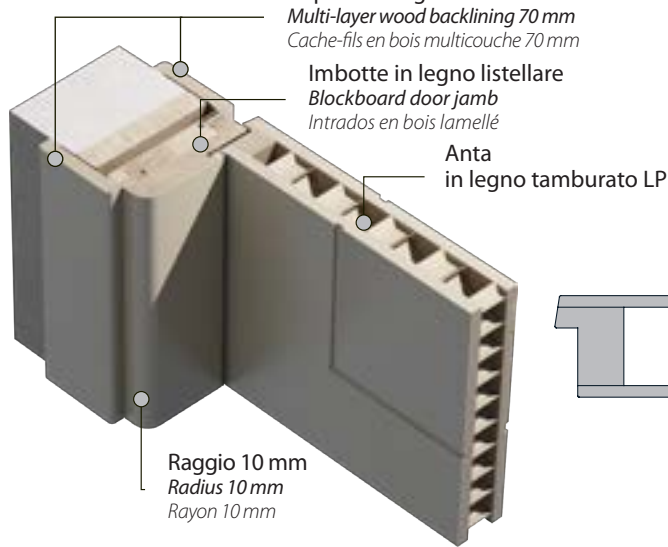
694



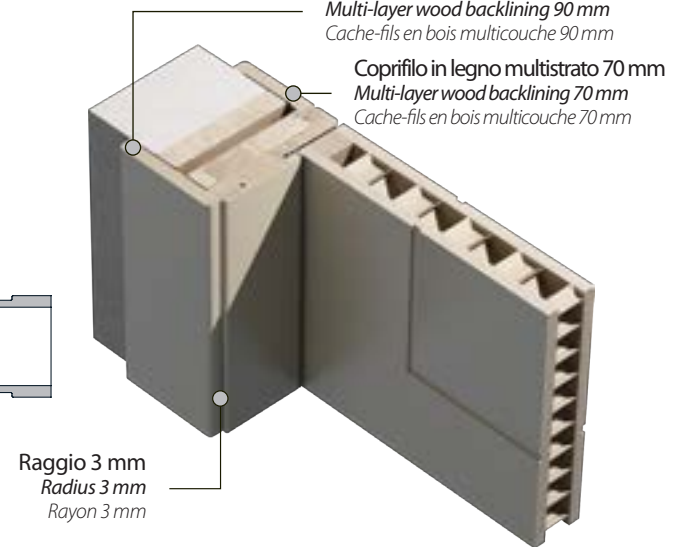
695

Per lavorazioni personalizzate, contattare l'ufficio commerciale.  
For working on the request to contact the sales office.  
Pour travailler sur la demande de contacter le bureau des ventes.

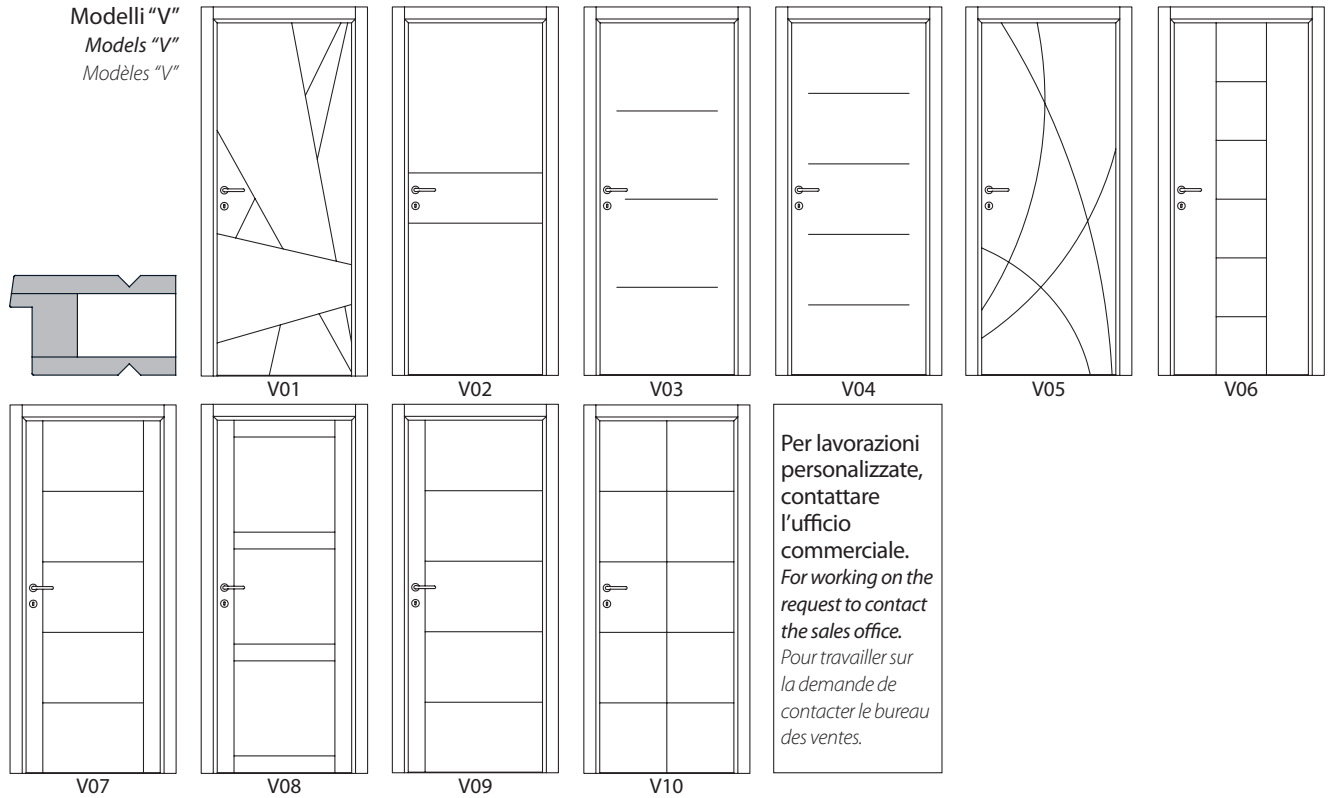
Imbotte - Raggio 10  
Radius 10 - Door jamb  
Intrados - Rayon 10



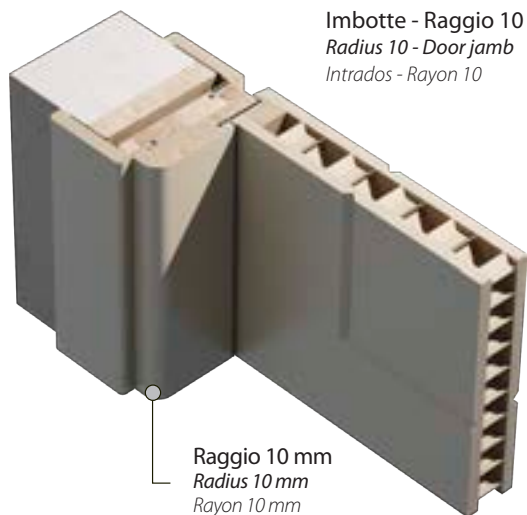
Imbotte - New Style  
New Style - Door jamb  
Intrados - New Style



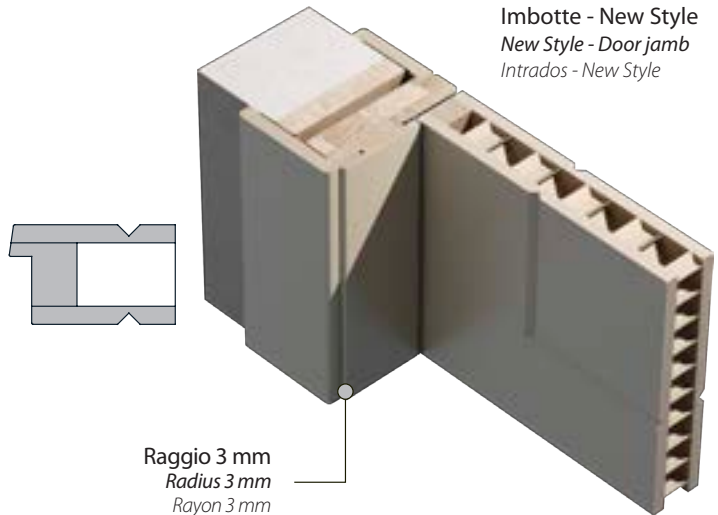
Modelli "V"  
Models "V"  
Modèles "V"



Imbotte - Raggio 10  
Radius 10 - Door jamb  
Intrados - Rayon 10



Imbotte - New Style  
New Style - Door jamb  
Intrados - New Style



# Qualunque sia il progetto

OTC DOORS è un produttore diretto. Ciò significa che per ogni progetto, sia di serie che personalizzato, ogni fase di sviluppo e realizzazione, dalla scelta dei materiali migliori alle soluzioni di montaggio più performanti, è seguita direttamente dall'azienda. Questa è la premessa fondamentale per distinguere i prodotti OTC DOORS dalla concorrenza italiana e straniera. Grazie a una struttura produttiva flessibile e alla competenza di personale qualificato con esperienza pluriennale, OTC DOORS è in grado di studiare soluzioni personalizzate e su misura anche in piccole quantità.

*Whatever the project*

*OTC DOORS is a direct manufacturer. Which means that for every project, be it standard or bespoke, each phase of development is carried out, from the choice of materials to the best performing assembly solutions, and followed closely by the company. This is the fundamental premise for distinguishing OTC DOORS products from Italian and foreign competition.*

*Thanks to a flexible production structure and to the competence of qualified personnel with many years' experience, OTC DOORS is able to perfect personalized and made to measure solutions, even for small quantities.*

*Quel que soit le projet*

*OTC DOORS est un fabricant direct. Ceci signifie que pour chaque projet, aussi bien de série que personnalisé, chaque phase de développement et de réalisation, du choix des meilleurs matériaux aux solutions de montage les plus performantes, est suivie directement par l'entreprise. C'est le principe fondamental pour distinguer les produits OTC DOORS de la concurrence italienne et étrangère.*

*Grâce à une structure de la production souple et aux compétences du personnel qualifié avec expérience pluriennale, OTC DOORS est en mesure d'étudier des solutions personnalisées et sur mesure même en petites quantités.*



